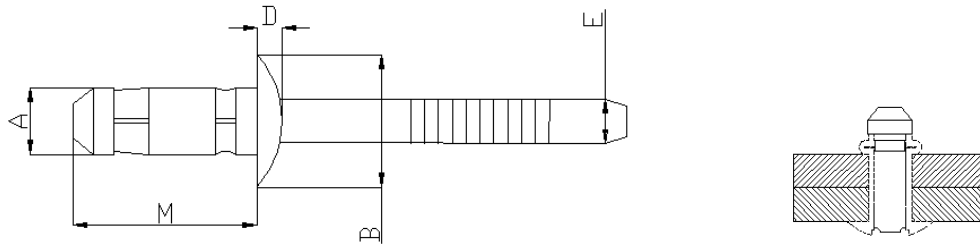


# S-BULB



Type	Material		Finish
	Rivet	Mandrel	
Steel	D8-2/SAE 1008	Cq45/SAE 1045	Zinc & Passivation
Stainless steel	1.4567 / 302HQ	1.4541 / 304	Natural

## Steel

Self-Fix	Textron BN01	A nom.	Hole Size	Grip Range	B max.	D max.	E nom.	M max.
SB-0611s	0611	4.8	4.9-5.1	1.5-3.5	9.6	1.5	3.0	12.1
SB-0614s	0614	4.8	4.9-5.1	3.5-5.5	9.6	1.5	3.0	14.6
SB-0618s	0618	4.8	4.9-5.1	5.5-7.5	9.6	1.5	3.0	17.6
<i>SB-0816s</i>	0816	6.4	6.6-7.0	2.0-6.0	13.1	2.8	4.0	17.0
<i>SB-0820s</i>	0820	6.4	6.6-7.0	5.0-9.0	13.1	2.8	4.0	20.0

## Stainless Steel

Self-Fix	Textron BE61	A nom.	Hole Size	Grip Range	B max.	D max.	E nom.	M max.
SB-0611c	0611	4.8	4.9-5.1	1.5-3.5	9.6	1.5	3.2	12.9
SB-0614c	0614	4.8	4.9-5.1	3.5-5.5	9.6	1.5	3.2	15.5
SB-0618c	0618	4.8	4.9-5.1	5.5-7.5	9.6	1.5	3.2	18.5
<i>SB-0816c</i>	N/A	6.4	6.6-7.0	2.0-6.0	13.1	2.8	4.0	17.0
<i>SB-0820c</i>	N/A	6.4	6.6-7.0	5.0-9.0	13.1	2.8	4.0	20.0

## Mechanical Strengths

Part No.	Shear (N)		Tensile (N)	Part No.	Shear (N)		Tensile (N)
	With stem	Without stem			With stem	Without stem	
<b>STEEL</b>				<b>STAINLESS</b>			
SB-0611s	3,600	3,300	3,800	SB-0611c	5,500	3,900	5,000
SB-0614s	4,200	3,300	3,800	SB-0614c	5,500	3,900	5,000
SB-0618s	5,600	3,300	3,800	SB-0618c	5,500	3,900	5,000
<i>SB-0816s</i>	10,000	5,000	7,000	<i>SB-0816c</i>	15,000	7,500	8,500
<i>SB-0820s</i>	10,000	5,000	7,000	<i>SB-0820c</i>	15,000	7,500	8,500

May 2009

VISIT OUR WEB-SITE: [www.self-fix-metals.com](http://www.self-fix-metals.com)